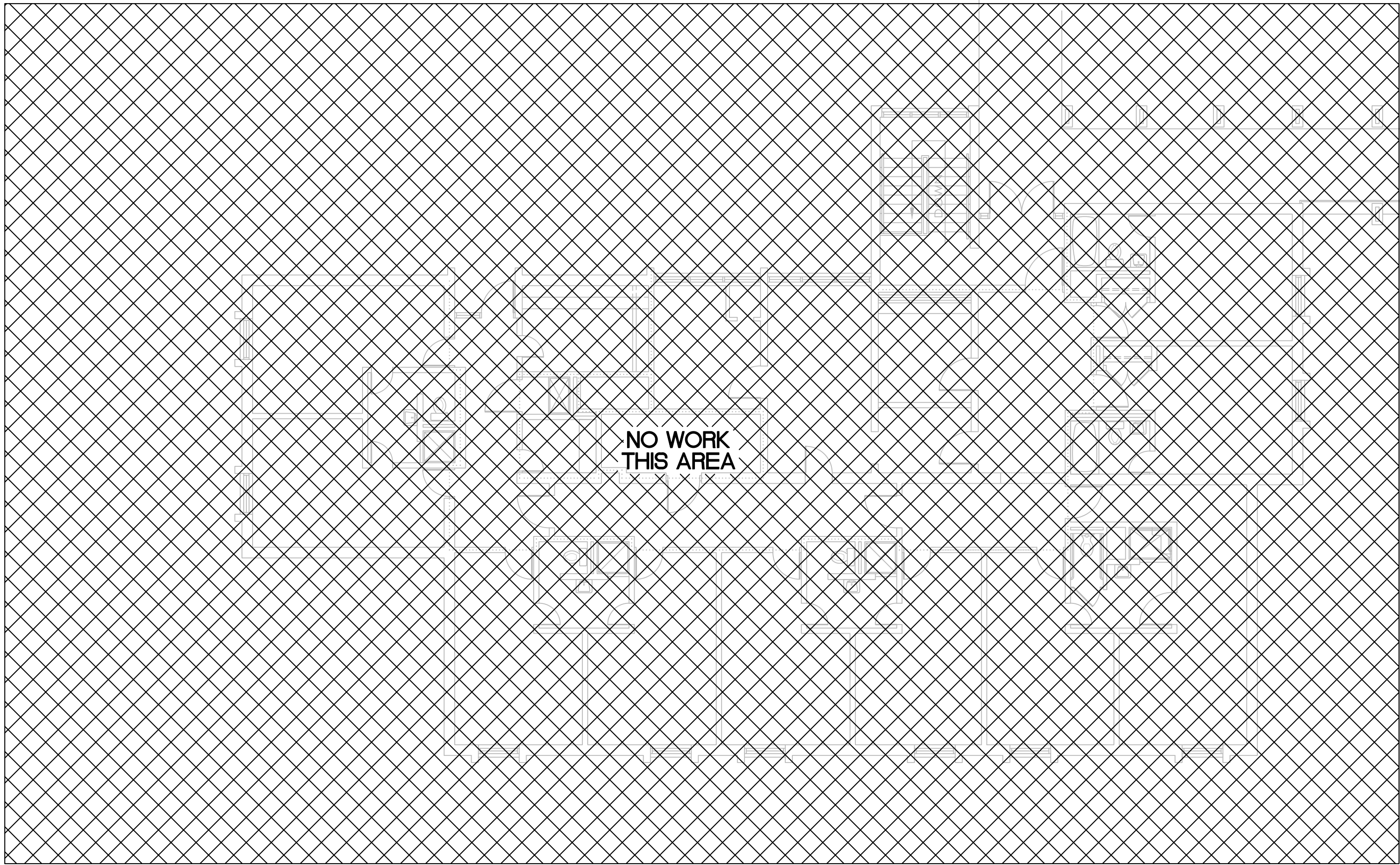


KEY NOTES

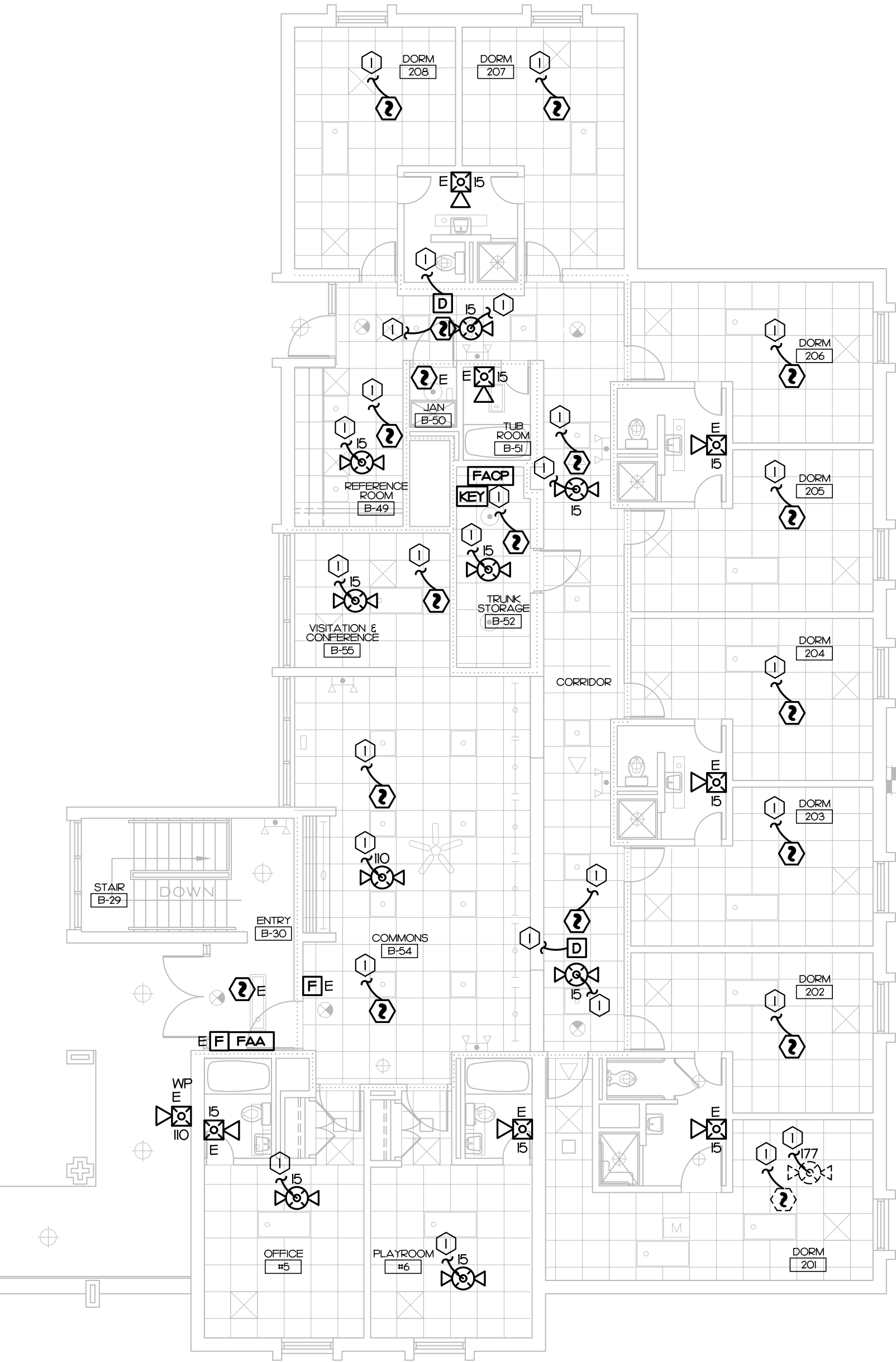
① EXISTING FIRE ALARM DEVICE TO BE REINSTALLED INTO THE NEW CEILING.

NOTES:

L CONTRACTOR TO INCLUDE AS PART OF THEIR BASE BID, THE RELOCATION OF UP TO 6 FIRE ALARM DEVICES PER BUILDING. THIS WILL BE TO ALLOW FOR MINOR RELOCATION OF FIRE ALARM DEVICES FOR COORDINATION WITH NEW SPRINKLER HEADS AND NEW LIGHT FIXTURES. ASSUME THE FIRE ALARM DEVICE MAY NEED TO BE SHIFTED TO AN ADJACENT TILE AND MAY REQUIRE REPLACEMENT OF THE EXISTING FLEX CONNECTIONS AND WIRING.




NO WORK  
THIS AREA



FIRE ALARM PLAN - BUILDING D2

SCALE: 1/8" = 1'-0"

1



3221 BLUE RIDGE ROAD, STE. 113  
RALEIGH, NC 27612  
P: 919.571.1111

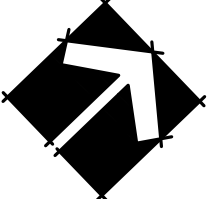
www.imegcorp.com

IMEG RESERVES PROPRIETARY RIGHTS, INCLUDING COPYRIGHTS, TO THIS DRAWING AND THE DATA SHOWN THEREON. SAID DRAWING AND/OR DATA ARE THE EXCLUSIVE PROPERTY OF IMEG AND SHALL NOT BE USED OR REPRODUCED FOR ANY OTHER PROJECT WITHOUT THE EXPRESS WRITTEN APPROVAL AND PARTICIPATION OF IMEG.  
©2024 IMEG CONSULTANTS CORP.  
North Carolina Design Registration #F-1507

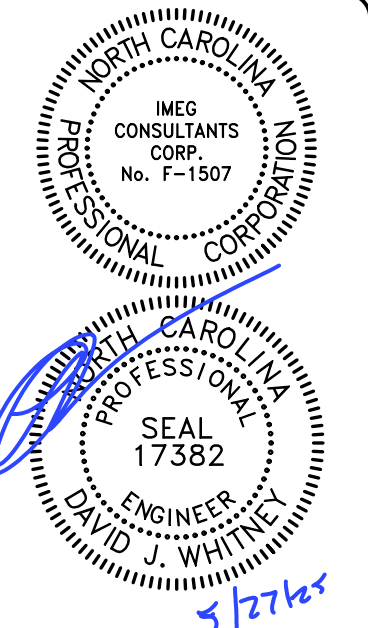
0123

REF. SCALE IN INCHES

PROJECT # 24048



REVISIONS	
FOR CONSTRUCTION	5/27/25



**ATLANTEC**  
ENGINEERS, P.A.  
— IMEG —  
3221 BLUE RIDGE ROAD, SUITE 113  
RALEIGH, NC 27612  
919.571.1111  
24048

PREPARED FOR:  
NC DEPARTMENT  
OF INSTRUCTION  
SCO #  
24-27792-01A

GOVERNOR MOREHEAD SCHOOL  
SPRINKLER, ADA TOILET, LIGHTING  
UPGRADES FOR DORMS A, B, + D  
RALEIGH, NC

CONTENTS:  
BUILDING D SECOND  
FLOOR FIRE ALARM  
PLAN

DATE:  
May 27, 2025  
  
DESIGNER: SWM  
ENGINEER: DJW

SHEET NO.  
**F-104**  
OF